

UNIⁱQ
DIGITAL

CE-T200KVM-T

4K60HZ HDMI KVM-T Over IP

200MTS@1-1/120+120MTS@1-1 / L2 SWITCHER, 1GIG NETWORK @CAT6A-STP

TX



RX



Flexible Network
Topology



Upto 200m
point-point connection



24 x 7 Industrial
Grade Reliability



4K @ 60 Hz Ultra-HD
Transmission

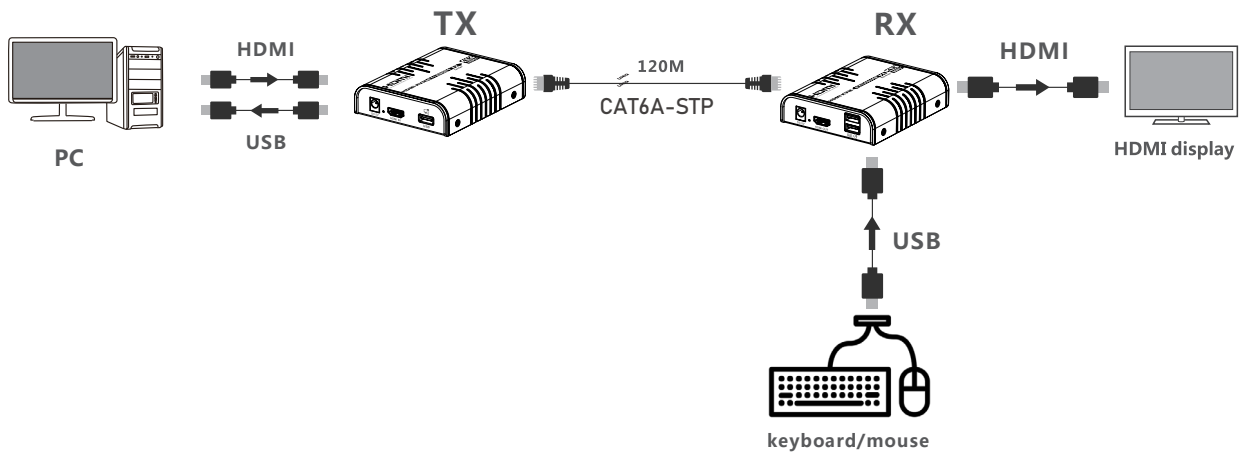


USB 2.0 KVM & Touch
Screen Control

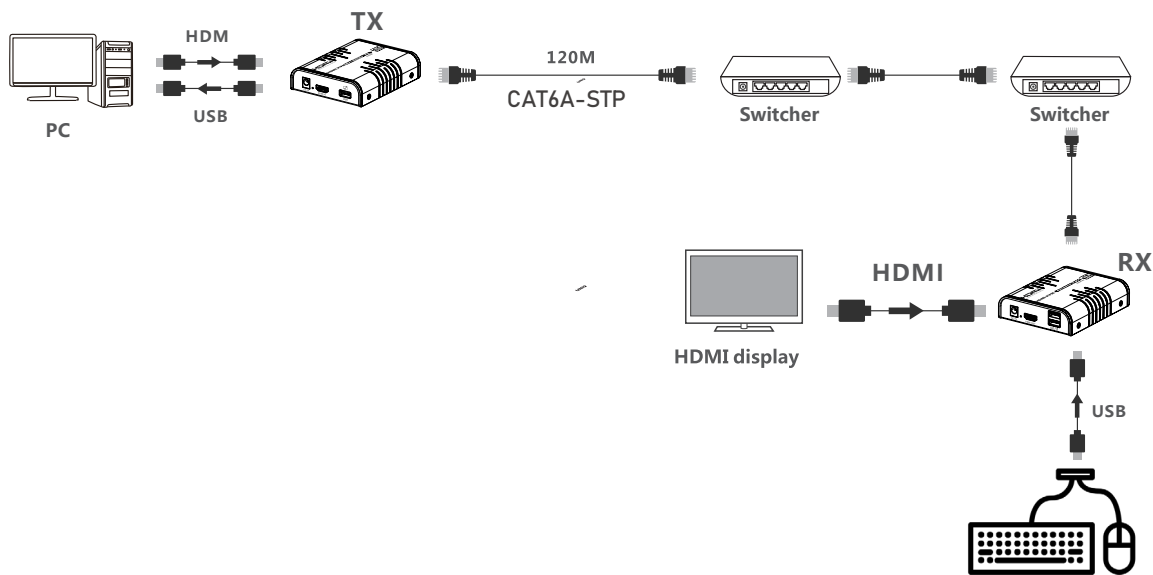
UK | USA | UAE | KSA | QATAR | AFRICA | SINGAPORE | INDIA

Connection diagram

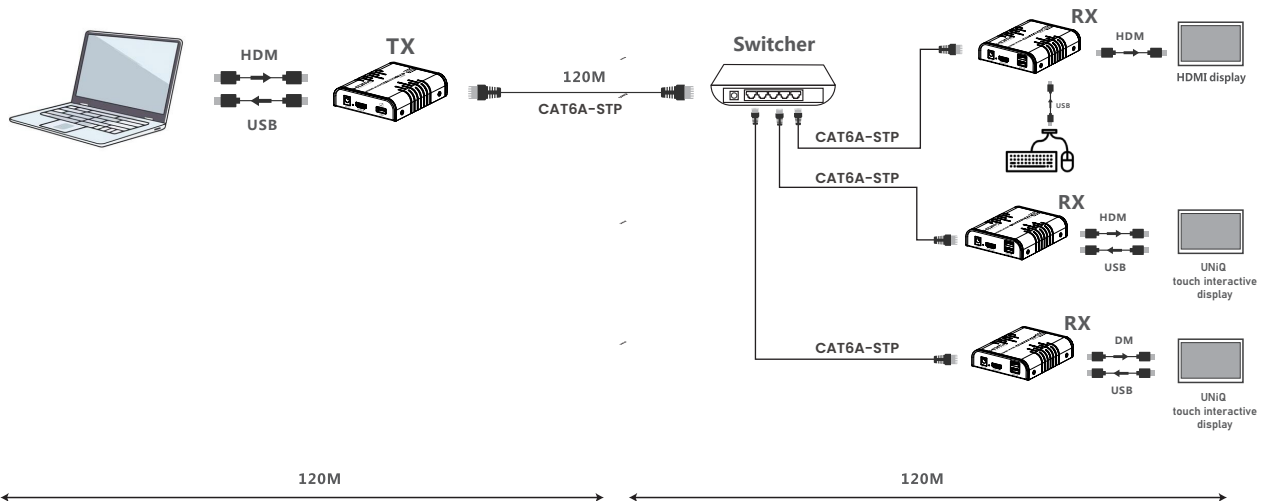
Point to Point Connection



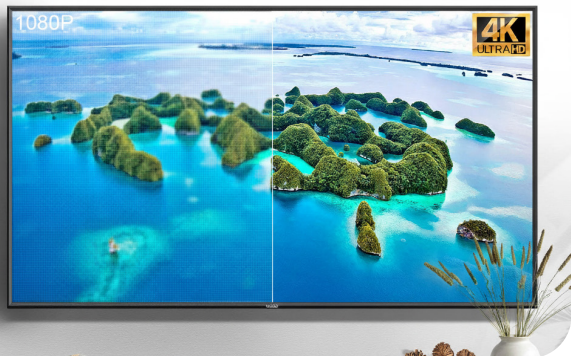
LAN Switch Cascade Connection



One-to-Many Connection



Precision Performance. Enterprise Reliability.

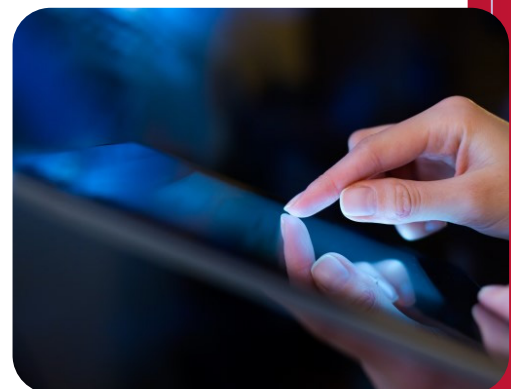


4K @ 60 Hz Ultra-HD Transmission

- ▶ Transmits uncompressed 4K UHD video up to 120 m via CAT6/6A/7 cable.
- ▶ Maintains crystal-clear visuals for multi-display and command-wall setups.
- ▶ Zero-lag transmission ensures real-time synchronization across all screens.
- ▶ Ideal for boardrooms, control rooms, and live monitoring environments.

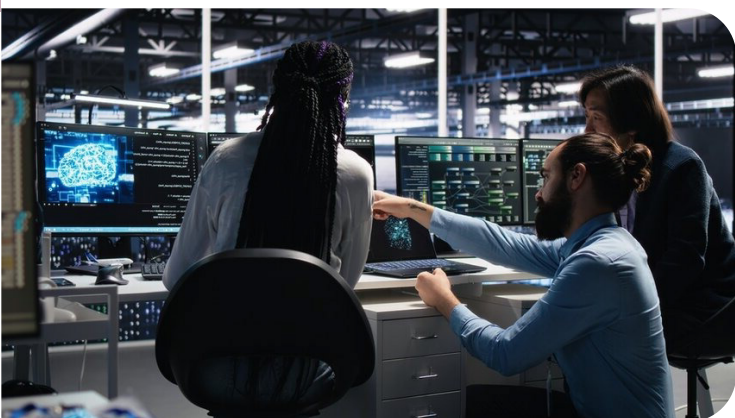
USB 2.0 KVM & Touch Screen Control

- ▶ Enables keyboard, mouse, and touch-panel control over a 1 G LAN.
- ▶ Compatible with Windows, macOS, and embedded control systems.
- ▶ Supports touch consoles, Bluetooth peripherals, and admin stations.
- ▶ Allows secure, remote system operation from centralized desks



Flexible Network Topology

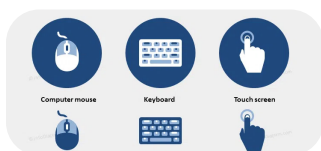
- ▶ Works in One-to-One, One-to-Many, or Switch-Cascade mode.
- ▶ Easily scale across floors, wings, or departments using existing network.
- ▶ No software or configuration — pure plug-and-play deployment.
- ▶ Perfect for enterprise facilities and distributed monitoring networks



24 × 7 Industrial-Grade Reliability

- ▶ Designed for continuous operation in mission-critical environments.
- ▶ Built-in Lightning, Surge, and ESD protection for maximum uptime.
- ▶ Stable power regulation ensures zero signal loss 24/7.
- ▶ Proven reliability in NOC/SOC, data centers, and command rooms

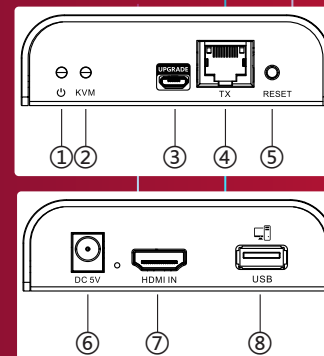
Support Keyboard and Mouse Touch Screen



Product Specifications

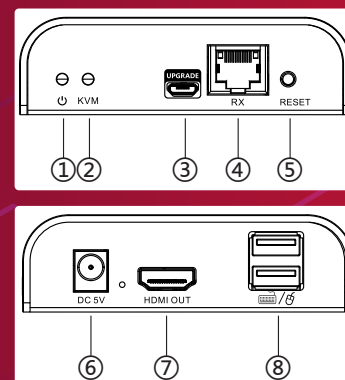
Item	Sender	Receiver
Product Description	4K60Hz @ 200Mts HDMI - KVM & Touch Over IP 1Gig Extender Kit [1Tx+1Rx] over CAT6a.STP; Achieve various distance negotiation Configs on 1-1/2/3/4/Many through 1GL2 PoE Network switch. Zero Latency 24/7 Plug & Play Wall mountable EDID HDCP Protection: - ESD, Surge, Lightning	
Resolutions	4096x2160@24/30/50/60Hz, 3840x2160@24/30/50/60Hz, 1080P@24/25/30/50/60Hz, 720P@50/60Hz, 576P@60Hz, 480P@60Hz, 1920x1200, 1680x1050, 1600x900, 1280x1024, 1280x960, 1280x720, 1024x768, 800x600	
Maximum transfer rate	18Gbps	
Compatibility	HDMI 2.0 HDCP 1.4/HDCP 2.2	
Package Contents	1) Transmitter x1 2) Receiver x1 3) Power Adaptor DC 5V/1A x2 4) USB Cable x1 5) User Manual x1	
Input interface	1 x HDMI	1 x RJ45
Output interface	1 x RJ45	1 x HDMI
HDMI length	≤ 5m	≤ 5m
Transmission distance	CAT5 80m/CAT5E 100m/CAT6A -STP - 120m	
Transmission latency	1080P: 80~110ms 4K@60Hz: 120~170ms	
Input interface	1 x HDMI	1 x RJ45
Output interface	1 x RJ45	1 x HDMI
HDMI output	LPCM 2.0	
HDMI output	DC 5V/1A	DC 5V/1A
Power Consumption	TX ≤ 3.5W	RX ≤ 2.5W
Protection	ESD protection 1a Contact discharge level 2 (±4KV) 1b Air discharge level 3 (±8KV) Implementation of the standard: IEC61000-4-2	
Storage Temperature and Humidity	-10°C ~ +70°C @ 10%-90%	
Working temperature and Humidity	-0°C ~ +60°C @ 10%-90%	
Humidity	0~90%RH (no condensation)	
Housing	Aluminium(Top cover); Iron(Bottom cover)	
Weight	240g	243g
Color	Black	
Dimensions	109.6(L)x89.5(w)x26.3(H)mm*2pcs	

HDMI EXTENDER TX (Sender)



① Power indicator	The indicator will turn on when power up
② KVM indicator	1) Light flashing: The KVM data is transmitting 2) Steady on: The computer and the USB port are connected
③ Micro USB port	Used for firmware upgrading
④ RJ45 signal output	Connect with the network cable
⑤ Reset button	Restart the device
⑥ Power input	Connect with DC5V/1A power adapter
⑦ HDMI input	Connect with the source device
⑧ USB port	Connect to the computer with USB cable

HDMI EXTENDER RX(Receiver)



① Power indicator	The indicator will turn on when power up
② KVM indicator	1) Light flashing: The KVM data is transmitting 2) Steady on: The mouse and the keyboard are connected
③ Micro USB port	Used for firmware upgrading
④ RJ45 signal input	Connect with the network cable
⑤ Reset button	Restart the device
⑥ Power input	Connect with DC5V/1A power adapter
⑦ HDMI output	Connect with HDMI display device
⑧ USB port	Connect with keyboard and mouse

Applications



Auditorium



NOC / SOC / CCC



Conference-Room



Town Hall



Training Hall

Prestigious Lineup of Cutting-Edge Professional AV Products

Ai Interactive Displays

AiO | Pro | Education Series

65" | 75" | 86" | 98" | 100"



Active LED Video Wall

Indoor & Outdoor LED Walls

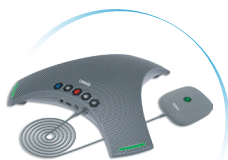
CoB, GOB, and Custom Pixel Pitch Options



Video Conferencing Products & Professional Cameras

From AI Video Bars to PTZ Cameras

**AiO Video Bars | AiO PTZ Video Bars
PTZ Cameras | Speakers Phone Conferencing | Microphones | DSP**



AV Interface Products

**Extenders – CAT6 Wireless | Point-Point
KVM Extenders | Over-IP
Matrix & Splitter Cum Extenders
Splitters Switchers | Matrix**



Disclaimer

- Specifications, features, visuals, and models are subject to change without notice.
- Product availability and features may vary by region.
- Colours/images shown are for reference only; actual product may differ.
- Warranty terms vary by model and region—refer to official documentation.
- We recommend staying updated via our official channels for the latest info.
- Performance may improve with software/firmware updates.
- All trademarks belong to their respective owners.
- We are not liable for typographical or illustrative errors.
- Please dispose of products responsibly as per local e-waste norms.
- Data (if applicable) is handled per our privacy and regulatory compliance.
- No liability is assumed for indirect or consequential damages